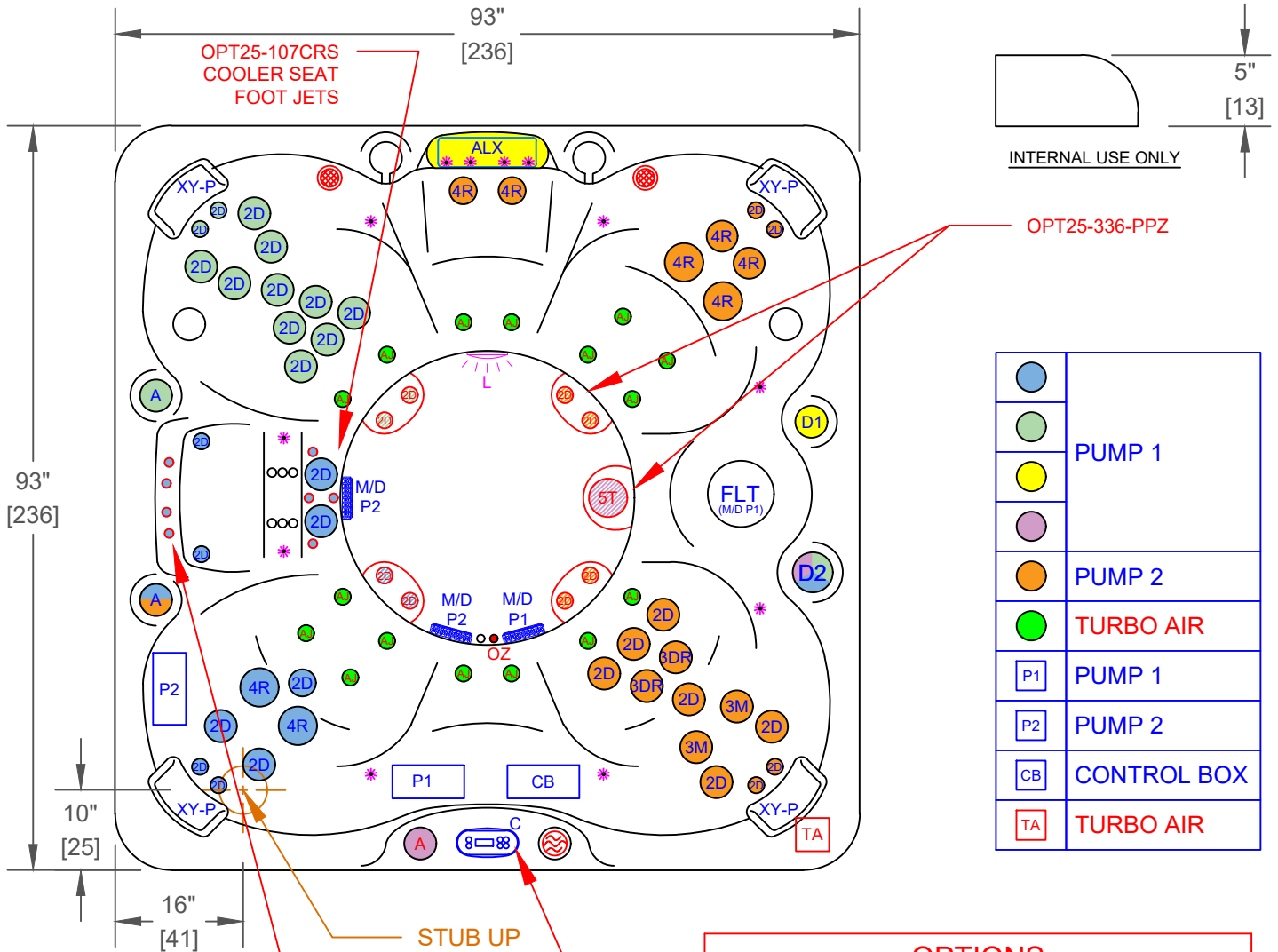


NOTES:  
 1. DUE TO OUR CONTINUOUS IMPROVEMENT PROGRAM, ALL MODELS AND SPECIFICATIONS ARE SUBJECT TO CHANGE WITHOUT NOTICE.



REPLACE WITH TP700 WHEN OPT25-107CRS IS ORDERED

|  |             |
|--|-------------|
|  | PUMP 1      |
|  |             |
|  |             |
|  |             |
|  | PUMP 2      |
|  | TURBO AIR   |
|  | PUMP 1      |
|  | PUMP 2      |
|  | CONTROL BOX |
|  | TURBO AIR   |

| SYMB. | DESCRIPTION                                | PART NUMBER         | QTY. |
|-------|--|---------------------|------|
| 2D    | 2" CLUSTER STORM DIRECTIONAL VELOCITY      | PLUCS2441009S-CDCL  | 31   |
| 4R    | 4" POLY STORM ROTO VELOCITY                | PLUCS2443029SS-CDCL | 8    |
| 3DR   | 3" MINI STORM TWISTER VELOCITY             | PLUCS2442009SS-CDCL | 2    |
| 3M    | 3" MINI STORM MASSAGE DIRECTIONAL VELOCITY | PLUCS2442059S-CDCL  | 2    |
| A     | VELOCITY AIR CONTROL VALVE                 | PLUCS6603709-CDCL   | 3    |
| D2    | VELOCITY 2" WATER DIVERTER VALVE           | PLUCS6053309-CDCL   | 1    |
| ALX   | LED WATERFALL WITH D1 VALVE                |                     | 1    |
| FLT   | 50 SQ. FT. BIO-CLEAN FILTER WITH TELEWEIR  | PLU510-9559-CDCL    | 1    |
| M/D   | MAIN DRAIN                                 | PLU21400203         | 3    |
| XY-P  | TEXTURED Y-PILLOW (WHITE)                  |                     | 4    |
| C     | TP500                                      |                     | 1    |
| L     | 5" MULTI COLORED LED LIGHT                 |                     | 1    |
| *     | PERIMETER LED LIGHTING                     |                     | 1    |
| P1    | HIGH PERFORMANCE PUMP 6.0 BHP              |                     | 1    |
| P2    | HIGH PERFORMANCE PUMP 4.0 BHP              |                     | 1    |
| CB    | CONTROL BOX WHISPER HOT™ HEATING SYSTEM    |                     | 1    |

| SYMB. | DESCRIPTION  | OPTION NUMBER  |
|-------|--|----------------|
| -     | DOME WITH FOOT JETS & TORNADO  | OPT25-336-PPZ  |
| -     | DELUXE SHELL COLOR UPGRADE (FROM GLOSS WHITE)  | OPT25-211-C    |
| -     | 1 HP BLOWER WITH 16 AIR JETS (UPGRADES TO BF501X AND TP700 EQUIPMENT)                  | OPT25-AIR759B  |
| -     | COOLER SEAT UPGRADE (INCLUDES BLOWER + 8 AIR JETS)                                     | OPT25-107CRS   |
|       | 24/7 FILTRATION SYSTEM   | OPT25-112C     |
|       | CAL SPAS SALT SYSTEM   | OPT25-113S     |
|       | 2.0 FREEDOM SOUND STEREO   | OPT25-S22      |
| -     | CAL CONNECT RF MODULE  | OPT25-168RF    |
|       | HYDRO CLEAR OZONATOR   | OPT25-102CX-C  |
| -     | PURE CURE UV SYSTEM  | OPT25-191B     |
| -     | ELITE HORIZONTAL CABINET PANELS AND BLACK BEAM CORNERS (COLORS: GRAY, MOCHA, LIME OAK) | OPT25-E981-PPZ |

| SPECIFICATIONS |                    | TITLE   | JET LAYOUT - 113S |              |
|----------------|--------------------|---------|-------------------|--------------|
| DIMENSION (in) | 93"x93"x37"        | LINE    | PATIO PLUS        |              |
| DIMENSION (cm) | 236x236x94         | MODEL   | 2024 SPA LINE     |              |
| DRY WEIGHT     | 900 LBS [408 Kg]   | NUM     | PPZ-843BC         |              |
| FILLED WEIGHT  | 4650 LBS [2109 Kg] | DWG NO. | CS003467          | REV A        |
| WATER CAP.     | 450 GAL [1703 L]   | SCALE   | NTS               | SHEET 1 OF 1 |